



The Arboretum at Fort Williams Park

- ❖ Reverse damage done by invasive plant species
- ❖ Restore native plant communities, biodiversity and wildlife habitat
- ❖ Improve open space, amenities, and access for visitors
- ❖ Foster educational resources, community participation and stewardship

ARBORETUM SITES

COMPLETED

- 1 Cliffside
- 3 Lighthouse View
- 7 Children's Garden

IN PROGRESS

- 2 **Cliff Walk Landscape**

FUTURE

- 4 Crossroads
- 5 Fruit Orchard
- 6 Pond
- 8 Tree Succession
- 9 Fort Williams Gateway
- 10 Woodland Garden
- 11 Meditation Point
- 12 Edible Nut Grove
- 13 Mansion Windbreak
- 14 Battery Keyes

- Natural Areas
- Open/Lawn Areas
- Historic Sites
- Parking



It is the mission of the Fort Williams Park Foundation to preserve and enhance the natural and historic resources of Fort Williams Park for future generations by providing funding support and stewardship for selected projects in the Park.



**FORT WILLIAMS PARK
FOUNDATION**

CLIFF WALK LANDSCAPE

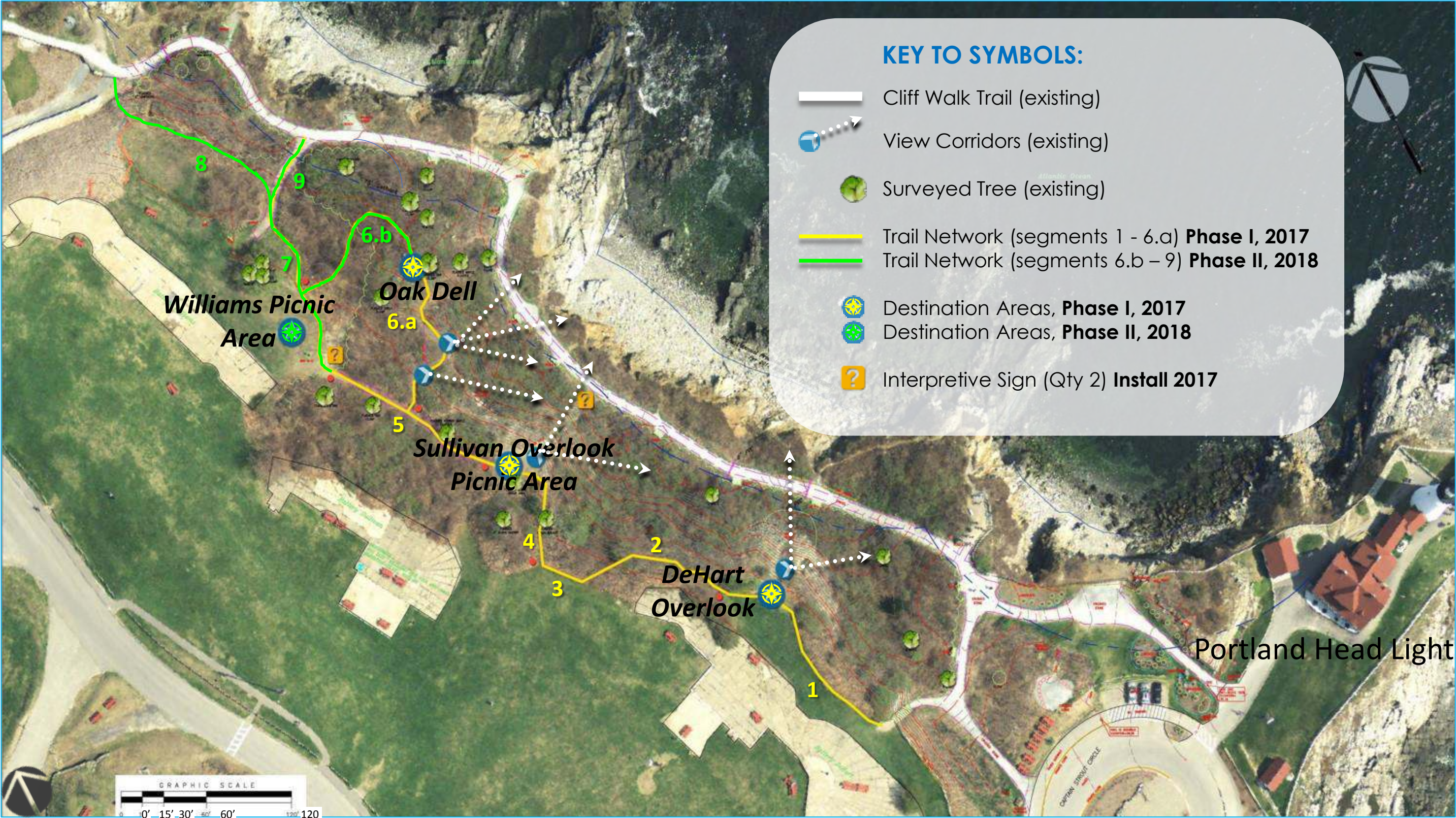
Aerial View in September 2014



The Arboretum at Fort Williams Park

CLIFF WALK LANDSCAPE

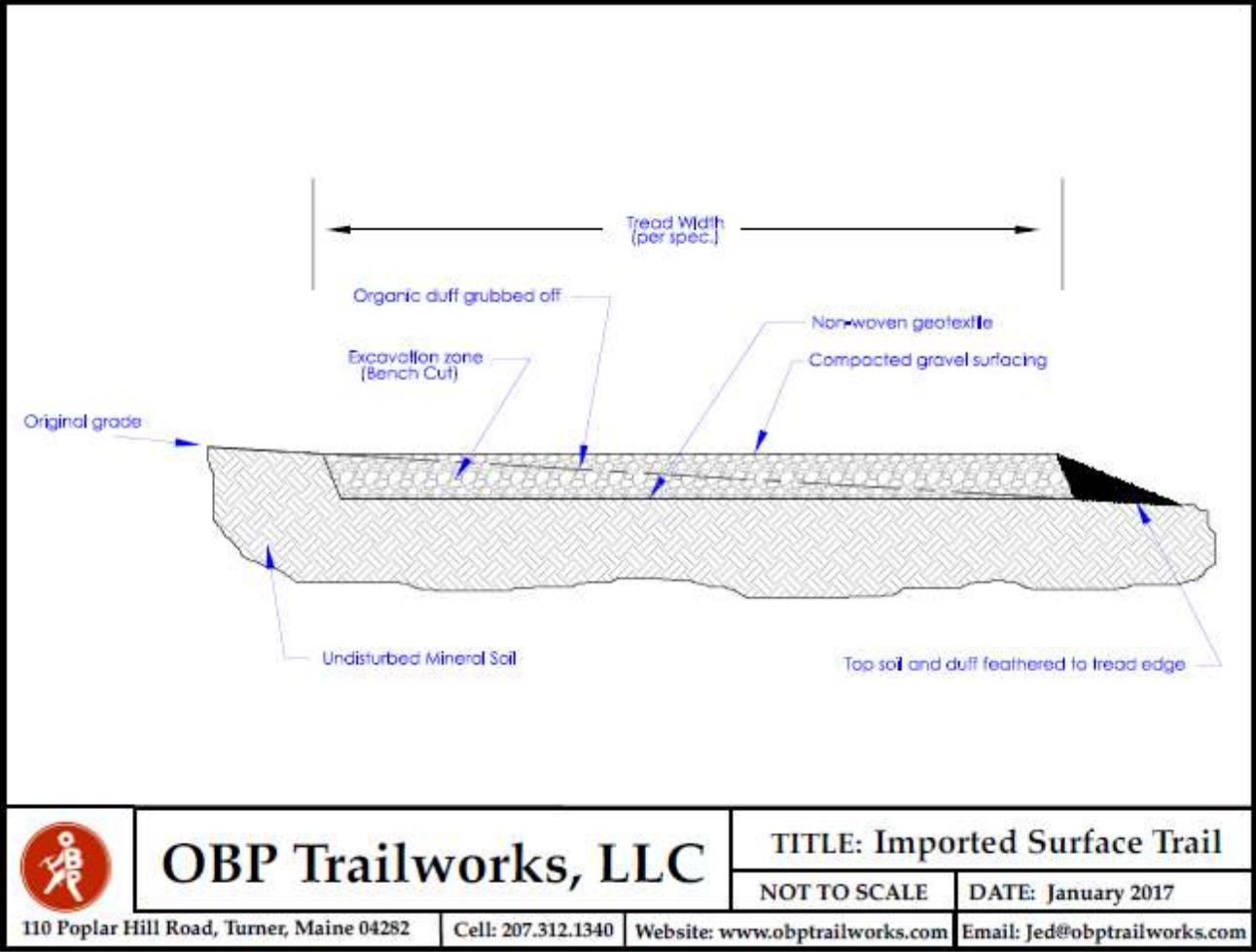
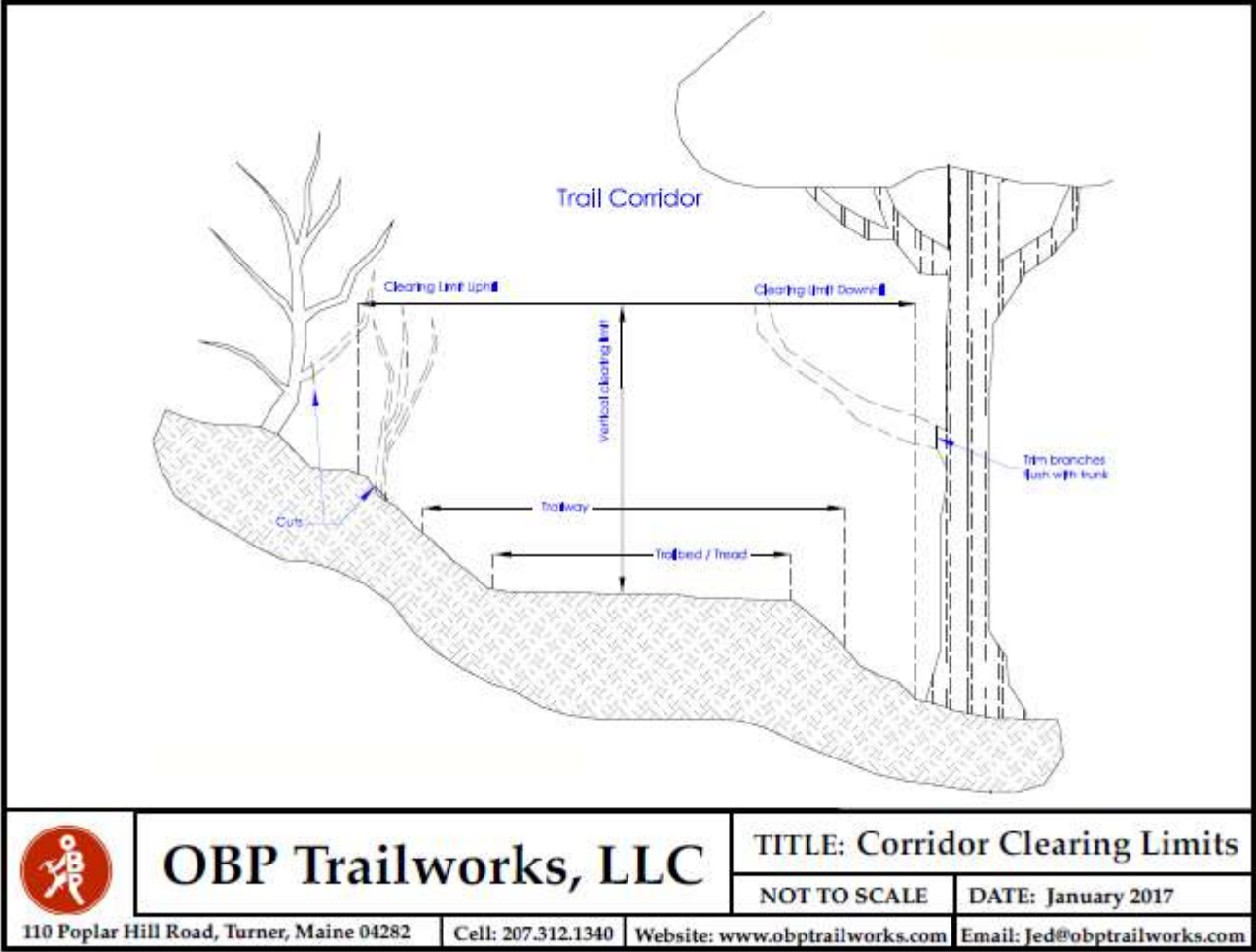
Map of Planned Destination Areas, Trails, and Interpretive Signage



The Arboretum at Fort Williams Park

CLIFF WALK LANDSCAPE

Trails: Tread Surface, Cribbing, and Drainage Swale



A stone-armored swale will be installed where trail segment 1 approaches DeHart Overlook, as the path crosses a low point that receives major stormwater runoff from Battery Knoll.

CLIFF WALK LANDSCAPE

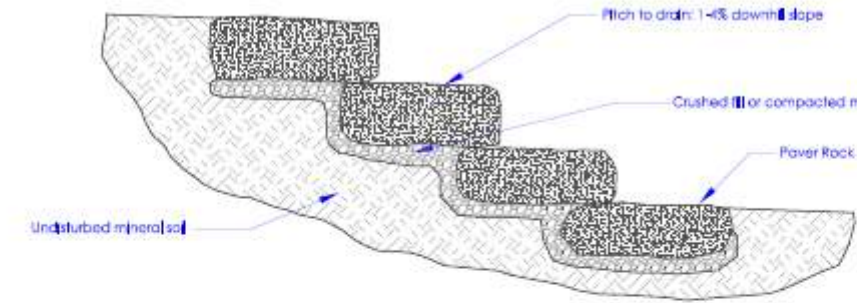
Trails: Rock Steps and Edging

Granite blocks will be set into sloped sections of trail segment 6.a leading to and from the Oak Dell destination area to serve as steps, with “gargoyle” stones along sides of steps for safety.

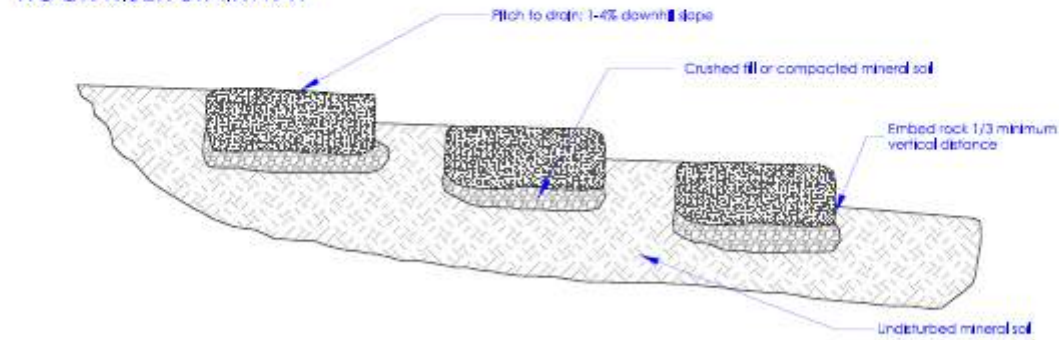


examples of rock steps with stone “gargoyle” edging

OVERLAPPING ROCK STAIRWAY



ROCK RISER STAIRWAY





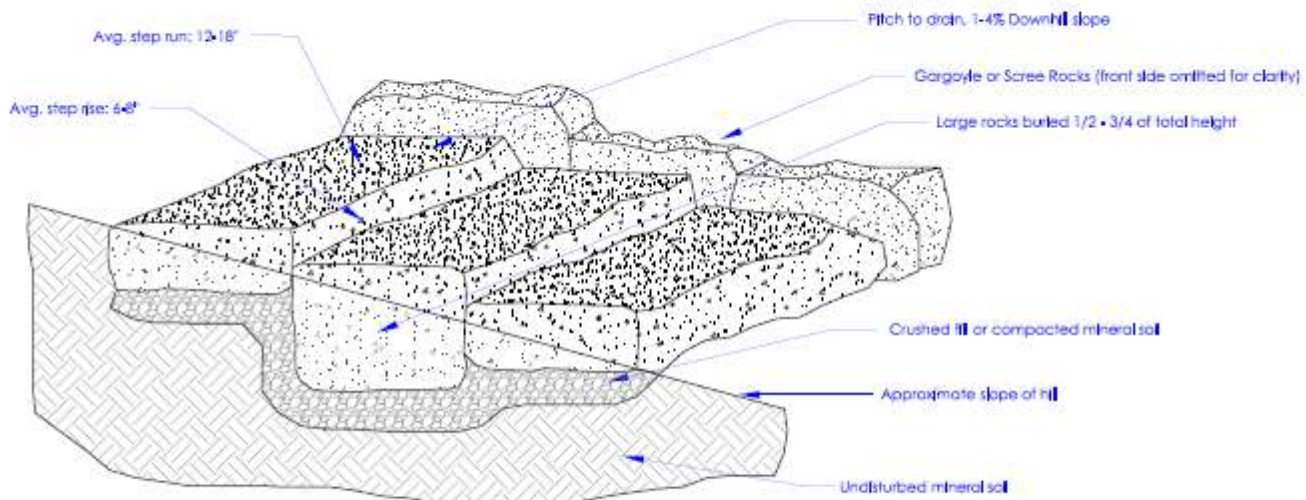
OBP Trailworks, LLC

110 Poplar Hill Road, Turner, Maine 04282 Cell: 207.312.1340 Website: www.obptrailworks.com Email: Jed@obptrailworks.com

TITLE: Rock Stairways

NOT TO SCALE

DATE: January 2017





OBP Trailworks, LLC

110 Poplar Hill Road, Turner, Maine 04282 Cell: 207.312.1340 Website: www.obptrailworks.com Email: Jed@obptrailworks.com

TITLE: Rock Steps

NOT TO SCALE

DATE: January 2017

CLIFF WALK LANDSCAPE

Destination Areas: DeHart Overlook and Sullivan Picnic Overlook



View from Battery Knoll towards DeHart Overlook



View from DeHart Overlook



example of informal boulder "bench" for DeHart Overlook



View across Sullivan Picnic Overlook



View across Sullivan Picnic Overlook (steep grade drop at left)

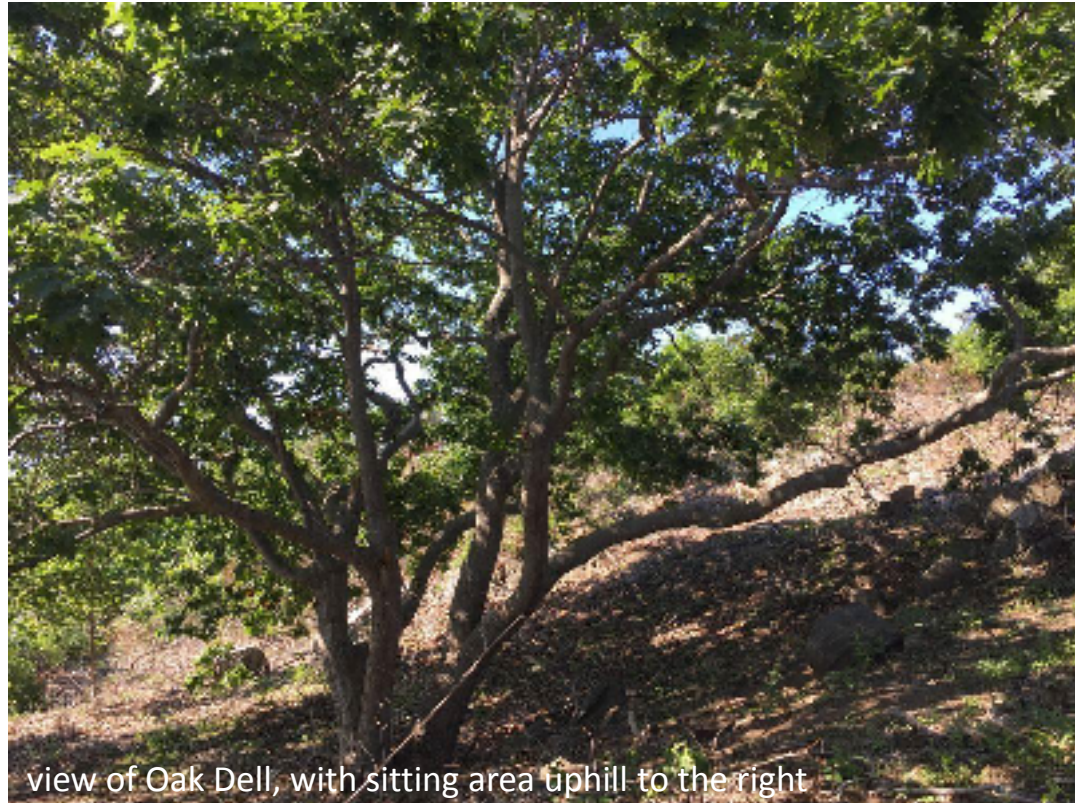


example of informal rock barrier along overlooks

The Arboretum at Fort Williams Park

CLIFF WALK LANDSCAPE

Destination Areas: Oak Dell and Williams Picnic Area



view of Oak Dell, with sitting area uphill to the right



view up into canopy of Oak Dell's signature red oak



view south across Williams Picnic Area



View north from within Williams Picnic Area

The Arboretum at Fort Williams Park

CLIFF WALK LANDSCAPE

Interpretive Signage and Plant Labels



1/2" Exterior CHPL Graphic. w/map, text and photos
(example: installed at Cliffside & Lighthouse View



Mounting: double post pedestal (45 Degree), black powder coated aluminum. In-ground mount installed at Cliffside & LHV



Plant Labels (Qty 100)
3" x 5" dark brown plastic with white text, supported on 24" metal stakes



Panel 24" x 36" x 1/2" thick exterior CHPL graphic. w/painting and text (example: installed in Children's Garden



Mounting: single post pedestal (45 Degree), black powder coated aluminum. In-ground mount (example: installed in CG)

- Interpretive Panels (Qty 2)**
1. Map of the site's trails, destination areas, and plant communities, with a brief explanation of the restoration process
 2. Wildlife habitat: web of connections between plant, animal and insect species and their habitats

CLIFF WALK LANDSCAPE

Phased Budget Summary

PROJECT EXPENSES	
Survey + Landscape Management Plan	\$13,500
Invasive Plant Control	\$89,409
Restoration Planting	\$91,845
Destination Areas (DeHart Overlook, Sullivan Picnic Overlook, Oak Dell, and Williams Picnic Area)	\$21,000
Trail Network	\$24,000
Interpretive Signage (2) plus Plant Labels (200)	\$7,448
TOTAL PROJECT EXPENSES	\$247,202
FUNDRAISING REQUIRED to COMPLETE PROJECT	
Project Expenses (services and materials as outline above)	\$247,202
Overhead (Transfers for Administration, Project Management, and Maintenance)	\$49,440
TOTAL REQUIRED FUNDRAISING	\$296,642
INCOME RECEIVED through Aug 7, 2017	
Individual Contributions (37 gifts from 32 donors)	\$28,848
Grant Awards (8 grants from 7 charitable foundations)	\$65,950
Less transfers to support overhead costs (Project Management, Administration, and Maintenance)	(\$10,935)
TOTAL INCOME	\$83,863
EXPENSES PAID through Aug 7, 2017	
Survey	\$3,500
Landscape Management Plan	\$10,000
Invasive Plant Management	\$3,341
TOTAL EXPENSES PAID	\$16,841
CASH BALANCE Aug 7, 2017	\$67,022

PLANNED 2017 PROJECT EXPENSES	
Site Amenities	
Destination Areas (3 of 4: DeHart Overlook, Sullivan Picnic Overlook, and Oak Dell)	\$17,050
Trail Network (6-1/2 of 9 segments)	\$18,521
Interpretive Signage (2)	\$5,448
Total Site Amenities	\$41,019
Restoration	
Invasive Plant Control	\$9,350
Soil Amenities, Seeding, and Water Line	\$6,600
Total Restoration	\$15,950
TOTAL PLANNED 2017 EXPENSES	\$56,969

REMAINING PROJECT EXPENSES (estimated for 2018-2022)	PHASED ANNUAL AMOUNTS				
Site Amenities	2018	2019	2020	2021	2022
Destination Areas (Williams Picnic Area in 2018)	\$3,950	\$0	\$0	\$0	\$0
Trail Network (remaining 3-1/2 of 9 segments in 2018)	\$5,479	\$0	\$0	\$0	\$0
Plant Labels (Qty 200: 30 in 2019 + 30 in 2020 + 60 in 2021 + 80 in 2022)	\$0	\$300	\$300	\$600	\$800
Total Site Amenities	\$9,429	\$300	\$300	\$600	\$800
Restoration					
Invasive Plant Control	\$18,894	\$18,240	\$17,280	\$14,024	\$8,280
Soil Amenities, Seeding, Planting and Miscellaneous Materials	\$14,040	\$17,200	\$15,250	\$15,575	\$23,180
Total Restoration	\$32,934	\$35,440	\$32,530	\$29,599	\$31,460
TOTAL ESTIMATED 2018-2022 EXPENSES	\$42,363	\$35,740	\$32,830	\$30,199	\$32,260

NOTE: The restoration budget for each year is difficult to determine in advance, given that the level of effort for each year will be determined by the measure of success for previous years.